



## ALLE AFMETINGEN EN DOORRIJHOOGTES ZIJN STEEDS OP AANVRAAG, ONGEACHT DE VERMELDE AFMETINGEN IN DEZE TECHNISCHE FICHE

### A new range of electric trucks

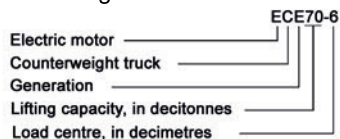
The Kalmar ECI 50-90L range is a new range of electric trucks with a 5-9 tonnes capacity, built for reliability and efficiency in demanding industrial applications. The new machines are based on our earlier successful range, which is now moving into an entirely new generation.

The electric trucks in the new range are an obvious choice where considerable demands are made in terms of environmental features and low noise levels, for example when working indoors. Reliable motors and intelligent electronic systems make the electric trucks very easy to drive and provide a high degree of precision, which means increased safety and efficiency.

Our operator's environment, which was already a world leader, has been developed and extended to now include three different concepts. The electronic systems represent an entirely new generation, which can also be extended by the addition of a whole range of intelligent handling options. The machines require a minimum of maintenance, and daily inspection is simple and easy to carry out.

The Kalmar ECE 50-90L is in every respect a real Kalmar truck built for tough handling.

### Model designation



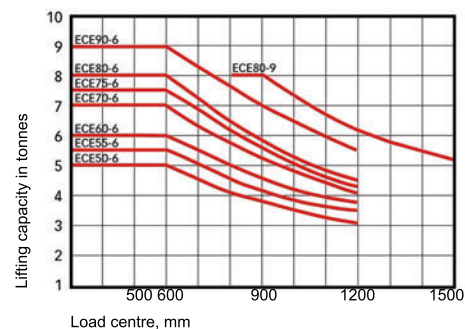
ECE 80-6 - Spirit Delta



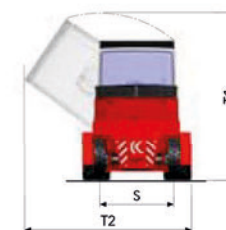
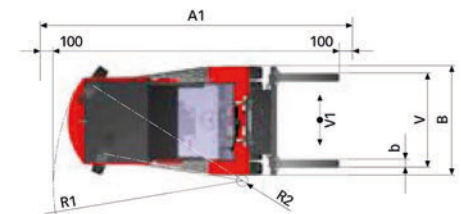
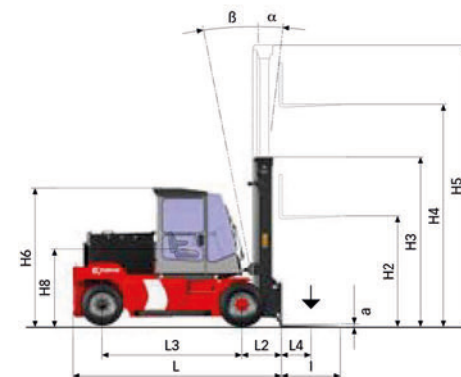
Spirit Delta Space (60-90L)



FlexCab



- Full lifting capacity up to 4 m lifting height with duplex / duplex free lift / triplex mast and fork carriage with side shift / fork positioning. Applies to ECE50-6 to ECE90-6L, except for ECE80-9
- Full lifting capacity up to 4 m lifting height with duplex mast and FEM fork carriage. Only applies to ECE80-9



				70-6	
Lift capacity	Load capacity	kg		7000	
Truck	Load centre	L4	mm	600	
	Truck length without forks	L	mm	3770	
	Truck width	B	mm	2000	
	Height, basic machine, Spirit Delta	H6	mm	2570	
	Height, basic machine, Spirit Delta Space	H6	mm	3170	
	Height, basic machine, Flexcab	H6	mm	2670	
	Seat height SDO/C	H8	mm	1440	
	Seat height SDC	H9	mm	1940	
	Distance between centre of front axle - front face of fork arm	L2	mm	710	
	Wheelbase	L3	mm	2450	
	Track (c-c) front - rear	S	mm	1500 - 1360	
	Turning radius, outer	R1	mm	3350	
	Turning radius, inner	R2	mm	150	
	Ground clearance, min		mm	160	
Forks	Height when tilting cab, max Spirit Delta	T1	mm	3050	
	Width when tilting cab, max Spirit Delta	T2	mm	3100	
	Height when tilting cab, max Spirit Delta Space	T1	mm	3300	
	Width when tilting cab, max Spirit Delta Space	T2	mm	3200	
	Height when tilting cab, max FlexCab	T1	mm	3150	
	Width when tilting cab, max FlexCab	T2	mm	3150	
	Min. aisle width for 90° stacking with forks	A1	mm	5410	
	Lifting height	H4	mm	3500	
Standard duplex mast	Mast height, min.	H3	mm	2625	
	Mast height, max.	H5	mm	4500	
	Mast tilting forwards - backwards	alpha - beta	°	5 - 10	
	Ground clearance, min.		mm	170	
Forks	Width	b	mm	150	
	Thickness	a	mm	60	
	Length of fork arm	I	mm	1200	
	Width across fork arms, max.	V	mm	1900	
	Width across fork arms, min.	V	mm	420	
	Sideshift +/- at width across fork arms	V1 - V	mm	375 - 1160	
Service weight	With battery		kg	9700	
	Without battery		kg	7000	
Axle load front	Unloaded		kg	4600	
	At rated load		kg	15700	
Axle load back	Unloaded		kg	5100	
	At rated load		kg	1000	
Wheels/tyres	Type, front-rear			Pneumatic - Pneumatic	
	Dimensions, front-rear	zoll		8,25-15 - 8,25-15	
	Number of wheels, front-rear (*driven)			4* - 2	
	Pressure	MPa		0,85 - 0,85	
Steering system	Type - manoeuvring			Hydraulic servo - Steering wheel	
Service brake system	Type - affected wheels			Oil cooled disc brakes (wet disc brakes - drive wheels)	
Parking brake system	Type - affected wheels			Dry, spring activated disc brake - drive wheels	
Hydraulic pressure	Max	MPa		19,5	
Hydraulic fluid volume	I			150	

**HERMANS**  
**HEFTRUCKS**